

## Furioso



### Key benefits

- Maximum speed of 25 knots
- Large fuel capacity of 34,000 litres for less frequent re-fuelling
- Seating for 24 passengers for high-speed transfer
- Deck area of 90m<sup>2</sup> with high Specification crane

Furioso is a modern crew transfer vessel (CTV) designed for efficient and reliable operations in offshore wind farms.

**Built with aluminium for lightweight construction and high strength, the Furioso boasts impressive dimensions, including a length of 27.2 meters, a beam of 9.4 meters, and a maximum draft of 1.8 meters.**

Its spacious forward deck area of 90 square meters provides ample room for equipment and personnel, while its high-speed capabilities of up to 25 knots allow for rapid transfers to and from offshore wind turbines. Powered by four Volvo Penta D13 700hp main engines and propelled by four Volvo IPS900 units, the Furioso offers exceptional manoeuvrability and fuel efficiency.

The vessel is equipped with two Sole 45GTC 44kVA generators to ensure reliable power supply, and a Fassi WCSQ1269-01 deck crane for handling equipment and cargo. With a fuel capacity of 34,000 litres and a range of 1,950 nautical miles, the Furioso can operate for extended periods without refuelling.

The Furioso is classified with BV1+ notation by Bureau Veritas, signifying its high standards of safety and quality. Its hull is designed for light ship operation and fast utility vessel use in sea area 3, and it is equipped with Dynamic Positioning (DP) systems for precise positioning in challenging offshore conditions. Flying the German flag, the Furioso is a testament to German engineering excellence and commitment to safety and efficiency in the offshore wind industry.

# Description and features

## General specification

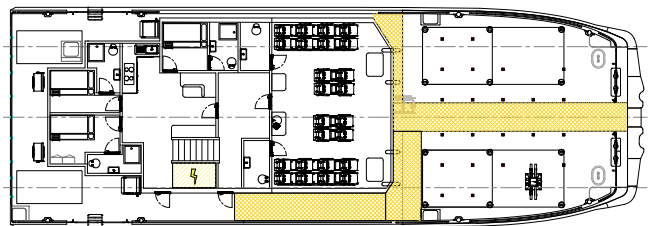
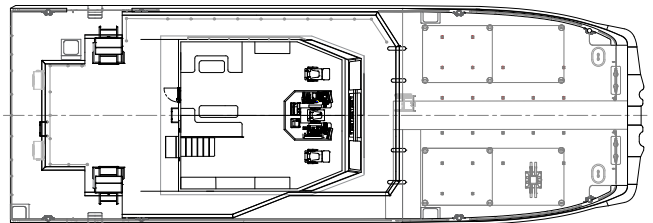
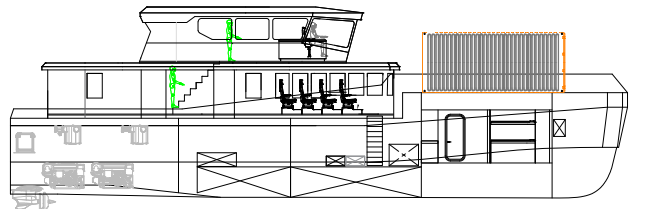
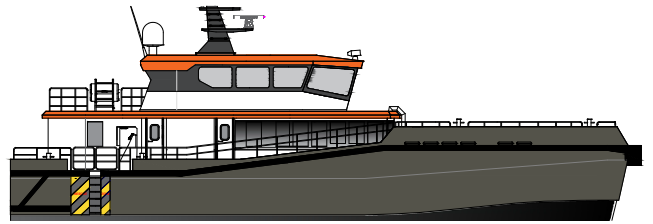
<b>Length overall:</b>	27.2m
<b>Beam:</b>	9.4m
<b>Draft max:</b>	1.8m
<b>Material:</b>	Aluminium
<b>Fwd deck space:</b>	90m <sup>2</sup>
<b>Maximum speed:</b>	25 knots
<b>Fuel capacity:</b>	34,000 litres
<b>Range:</b>	1,950m
<b>Cargo capacity:</b>	1.5t/m <sup>2</sup> 3 x 10' containers or 1 x 20' + 1 x 10'

## Machinery

<b>Main engines:</b>	4 x Volvo Penta D13 700hp
<b>Propulsion:</b>	4 x Volvo IPS900
<b>Generator:</b>	2 x Sole 45GTC 44kVA
<b>Deck crane:</b>	Fassi WCSQ1269-01

## Classification

<b>Class notation / coding:</b>	BV1+ HULL MACH Light Ship – Fast Utility Vessel Sea area 3 / DG
<b>Flag</b>	Germany



## Can't find what you are looking for?

Contact our global sales team at [sales@oegrenewables.com](mailto:sales@oegrenewables.com) or visit our website to find your regional representative at [oeg.group](http://oeg.group)

E & OE – All dimensions and weights are accurate at the time of creation. Please check exact specifications of units with your local representative when ordering.

