

# Manor Endurance



Manor Endurance is a multi-purpose offshore crew transfer vessel designed to transport personnel and equipment to and from offshore wind farms.

**Built at the Manor Marine shipyard in Portland, UK and delivered in July 2020, the Endurance has been designed with the latest technology and quad IPS units; the design maximises accommodation, deck space and carrying capacity.**

At 26 metres LOA with three decks providing accommodation for 14 personnel, deck space of 140m<sup>2</sup>, fuel capacity of over 30 tonnes and an offshore endurance of 7 days, the Endurance is a true multi-purpose vessel.

## Key benefits

- Maximum speed of 23 knots
- Large fuel capacity of 34 tonnes for less frequent re-fuelling
- Seating for 24 passengers for high-speed transfer
- Accommodation for 14 personnel
- Deck area of 140m<sup>2</sup> with high Specification crane
- Rapid fuel transfer and polishing system for generators
- Bow and stern fenders for optional cargo transfer
- Paperless with fully electronic charts and publication

# Description and features

## General specification

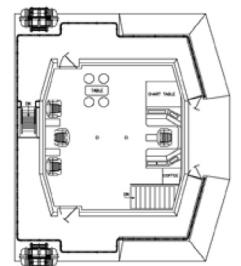
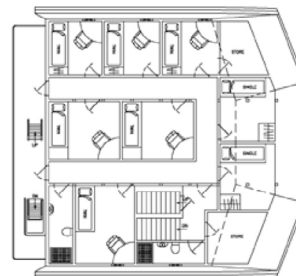
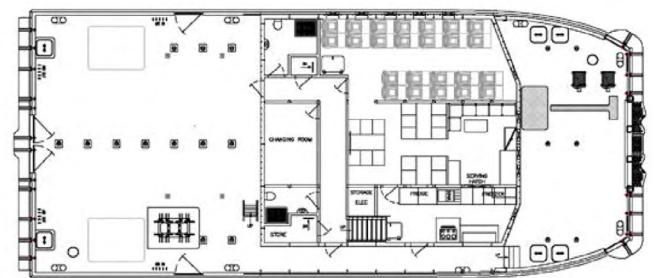
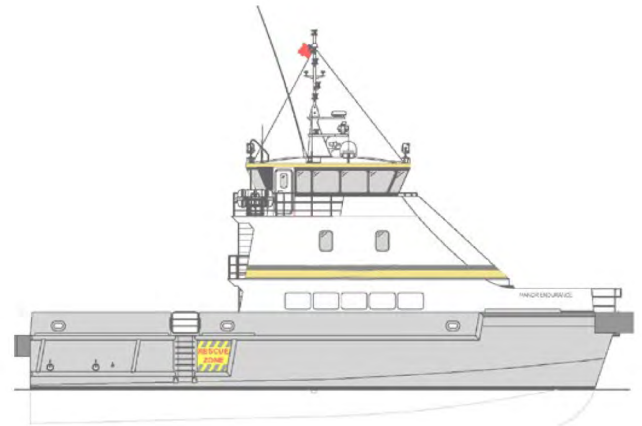
<b>Length overall:</b>	26.46 metres
<b>Beam:</b>	10.90 metres
<b>Max. draft:</b>	2.56 metres
<b>Material:</b>	Aluminium
<b>Aft deck space:</b>	100 m <sup>2</sup>
<b>Fwd deck space:</b>	40 m <sup>2</sup>
<b>Max. speed:</b>	23 knots
<b>Fuel capacity:</b>	34 tonnes
<b>Range:</b>	1800 nm
<b>Cargo capacity:</b>	40 tonnes

## Machinery

<b>Main engines:</b>	4 x 700hp Volvo Penta D13
<b>Propulsion:</b>	4 x IPS 900
<b>Auxillary sets:</b>	2 x Synced 35kw Kohler generators
<b>Deck crane:</b>	Fassi 215

## Classification

<b>Class notation:</b>	BV Windfarm Service Ship S1
<b>Flag coding:</b>	UK Cat 1 HS-OSC inc. DG
<b>Personnel:</b>	24 pax/4 crew



## Can't find what you are looking for?

Contact our global sales team at [sales@oegrenewables.com](mailto:sales@oegrenewables.com) or visit our website to find your regional representative at [oeg.group](http://oeg.group)

E & OE – All dimensions and weights are accurate at the time of creation. Please check exact specifications of units with your local representative when ordering.

