

# Valkyrie



Valkyrie is a multi-purpose offshore crew transfer vessel designed to transport personnel and equipment to and from offshore wind farms.

**The Valkyrie is a Windflex-27 design from Incat Crowther, the first of this design to be built by Penguin Shipyard.**

A large working deck forward can accommodate up to 4 x 10ft containers or 2 x 20 ft and is equipped with a deck crane. The aft deck can accommodate a 10ft container. Both decks feature multiple tie-down points for flexibility. Specifically built for supporting offshore wind farms, the Valkyrie currently operates in Taiwan with a carrying capacity of 50 tonnes with a speed of up to 30 knots.

## Key benefits

- Cruising speed of 24 knots for reduced transit time to the windfarm
- 35,000 litre fuel capacity for increased endurance offshore
- Rapid refuelling system for temporary power generators
- Large passenger cabin with 12 seats and ample storage space for kit
- Large foredeck, 2 x 10ft container lashing points
- Active fender system to reduce impact loading
- Fuel recovery and filtering from offshore locations
- Very low draft for shallow sea areas and tidal ports
- Highly maneuverable with jet propulsion, able to sail with <1 knS

# Description and features

## General specification

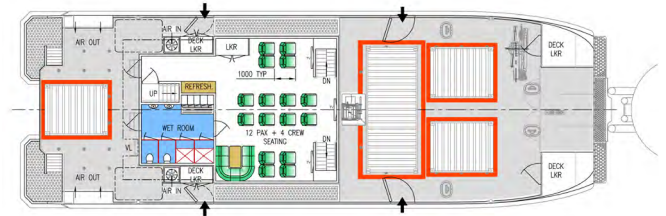
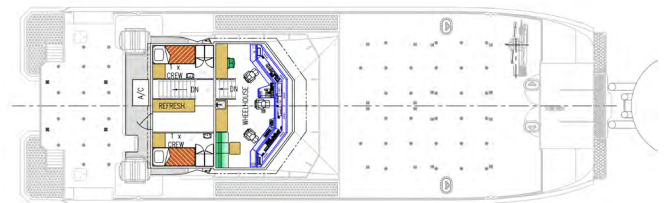
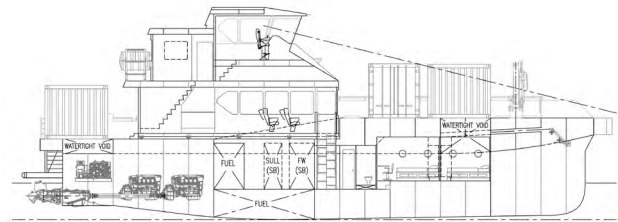
<b>Vessel type:</b>	Catamaran
<b>No. of PAX:</b>	24
<b>Length overall:</b>	27.1m
<b>Beam overall:</b>	9m
<b>Operational draft:</b>	1.4m
<b>Extreme draft:</b>	1.6m
<b>Hull material:</b>	Aluminium
<b>Service speed:</b>	25 knots
<b>Maximum speed:</b>	28 knots
<b>Fuel transfer capability:</b>	Yes
<b>Fuel capacity:</b>	35,500 litres
<b>Fresh water capacity:</b>	3,500 litres

## Machinery

<b>Engines:</b>	4 x Scania DI16 077M – 662 kW
<b>Propulsion:</b>	4 x Hamilton HM521 WaterJet Including JETanchor – uncertified DPO station keeping
<b>Deck crane:</b>	Palfinger PK 23500M

## Classification

<b>Classification and Notation(s):</b>	BV in compliance with Taiwanese CR class
<b>Flag / Coding:</b>	Taiwanese Flag



## Can't find what you are looking for?

Contact our global sales team at [sales@oegrenewables.com](mailto:sales@oegrenewables.com) or visit our website to find your regional representative at [oeg.group](http://oeg.group)

E & OE – All dimensions and weights are accurate at the time of creation. Please check exact specifications of units with your local representative when ordering.

