



Renewables

DATA SHEET

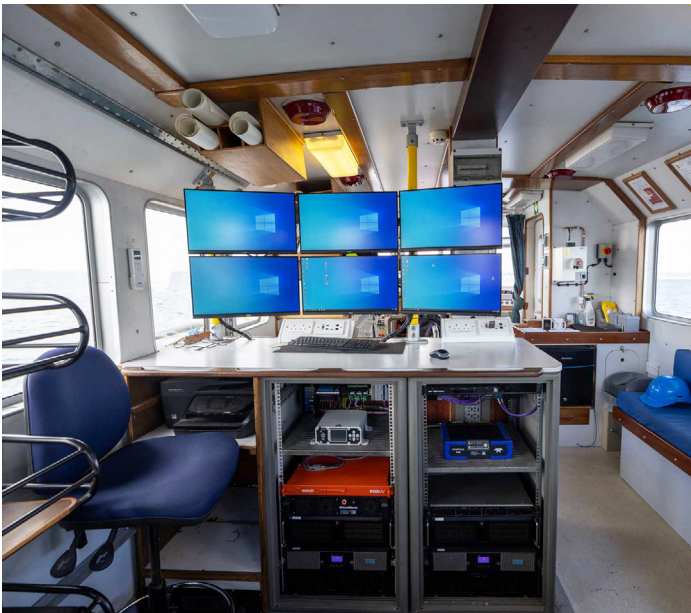


Manor Brunel

The Manor Brunel is a purpose-built dedicated survey platform for the acquisition of detailed hydrographic and geophysical data.

With an A-frame and additional port and starboard poles available, the vessel can also mobilise for towfish work with USBL tracking and subbottom profiling.

Our survey vessel supports a range of offshore services, providing a wide range of survey capabilities to the marine renewable energy, civils and coastal/offshore sectors.



KEY BENEFITS

- Permanently mobilised survey spread
- High resolution Teledyne T51-R MBES
- Hydraulically operated pole in dedicated moonpool
- Hull mounted SBES and ADCP
- Twin side poles (USBL / SBP etc)
- Large deck working spaces with 1.5 tonne crane
- UK CAT 2 (60 miles)
- Capacity for 6 personnel and 2 crew

Description and Features

GENERAL SPECIFICATION

Length overall:	19.6m
Beam:	5.8m
Max draught:	2.0m
Material:	Steel
Maximum speed:	14 knots
Fuel capacity:	8,100 tonnes
Gross tonnage:	41.5 tonnes
Water capacity:	600 litres

MACHINERY

Main engines:	2 x Cummins NT855M 720hp
Propulsion:	Drive shaft
Generator:	1 x Beta Marine Kubota 20kVA main + 7kVA aux
Deck crane:	Copma 2000 75.2, 1.5 tonnes
A-frame:	Available on request

SURVEY INSTRUMENTS

Inertial navigation system:	Applanix POS MV WaveMaster II RM
Multibeam echosounder:	RESON SeaBat T51-R (800kHz)
Singlebeam echosounder:	Odom Echotrac E20 Dual Frequency
Sound velocity:	SVP-70, Valeport SWiFT
GNSS:	NovAtel MarinePak7 RTK
ADCP:	RDI Workhorse Mariner (300kHz)
Gyrocompass:	TSS MAHRS

CLASSIFICATION

Flag / Coding:	UK Cat 2 (60 miles)
Personnel:	6 pax / 2 crew

