

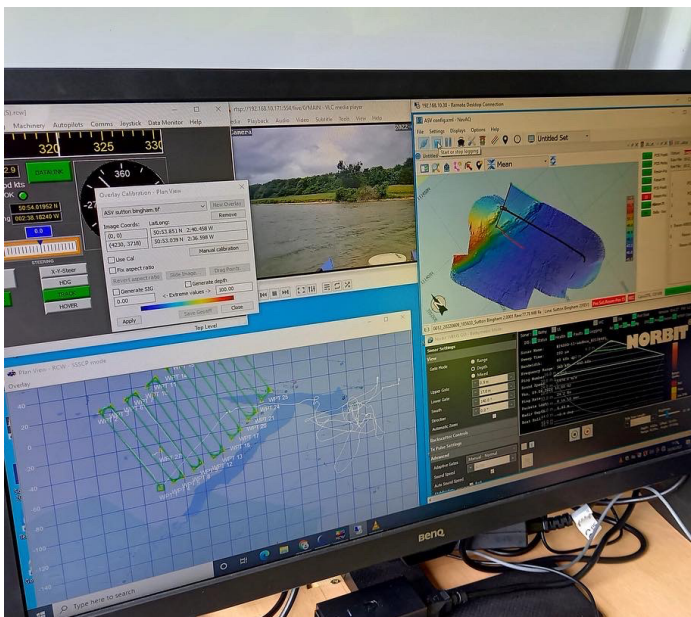


REAV-28 ASV

The REAV-28 is a 2.8m inshore multi-purpose uncrewed surface vehicle suitable for a range of hydrographic and environmental survey applications.

The REAV-28 is a 2.8m inshore multi-purpose uncrewed surface vehicle (USV) featuring a catamaran hull form and a fully electric propulsion system.

The REAV-28 USV platform can be deployed and recovered from foreshores and beaches for a range of hydrographic and environmental survey applications. Its design makes it ideally suited for operations within inland categorised waters and environmentally sensitive worksites.



KEY BENEFITS

- Fully electric propulsion system
- Trailer portable
- Capable of carrying a range of mounted survey systems
- Marine-grade aluminium alloy construction
- Wifi and cellular communications
- Modular, demountable structure
- Operates in significant wave heights up to 1.5m

Description and Features

GENERAL SPECIFICATION

Length overall:	2.8m
Width:	1.2m
Height:	1.1m
Weight:	120kg Light Ship
Max draft:	0.25m
Hull type:	Twin Hull Catamaran
Hull Composition:	Rotationally-moulded LLDPE

PERFORMANCE

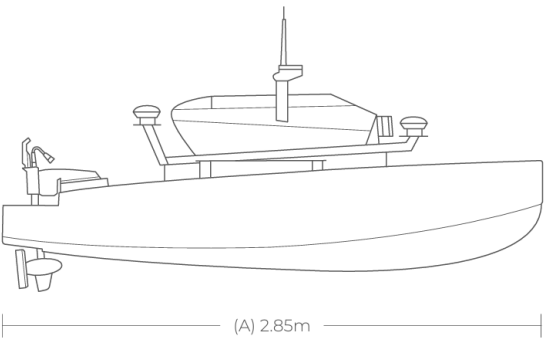
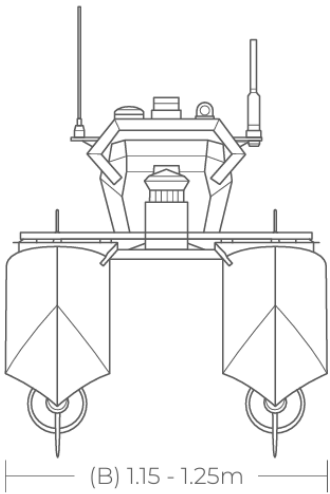
Propulsion:	Ultralight 1103 AC (1100w) outboards
Power:	Lithium-ion batteries
Speed:	5.5 knots
Endurance:	Up to 9 hours from a full battery charge
Range:	Over 2km

PAYLOAD

The payload pod is capable of carrying large multibeam echosounders, sub bottom profilers and hull mounted side scan sonars

LAUNCH / RECOVERY

Transported by van and launched from a bespoke launching trolley, from slipway or shallow beach



OEG Renewables