




Training courses

Providing specialist training solutions
for the wind energy sector

A large white offshore wind turbine stands prominently in the foreground, its three blades extending towards the top left of the frame. The turbine is mounted on a yellow lattice-structured jacket foundation. In the background, several other similar wind turbines are visible, receding into the distance over a dark blue sea under a clear, light blue sky. The overall scene conveys a sense of clean, renewable energy.

OEG is a leading energy solutions business, providing mission critical infrastructure assets and technical solutions to the global offshore energy industry.

We empower individuals and organisations in the renewable energy sector with the skills and knowledge they need to succeed.

As the demand for skilled workers in the renewable energy sector continues to grow, we offer a comprehensive range of training solutions. Whether you're an individual seeking a career change or an established company looking to upskill your workforce, we have the right program for you, specialising in rope access & renewables both on & offshore.

Our training centre

We provide high-quality, industry-specific training delivered by experienced professionals who are passionate about sharing their knowledge.

Our training centre

Located in Bootle, near Aintree Racecourse at the end of the M57/M58 motorway, our training centre is just a 25 minute drive from Liverpool airport and 40 minutes from Manchester airport.

For participants requiring overnight accommodation, there is a range nearby.

Courses

We deliver over 30 independently accredited and verified courses providing academic and practical tuition to established professionals both within the renewable industry and further afield, as well as providing a platform for those looking to transition to the renewable sector or at the very start of their career.

Every course is accredited and verified to the respective regulatory authority standards, ensuring participants are provided with a learning experience based on quality, safety and satisfaction. Skills and knowledge are gained within classroom-based academic lessons supplemented by practical exercises simulating real life scenarios and replicating a typical work day.

Lunch is provided on all our courses.

Instructors

Our instructors have a wealth of knowledge, skills and experience and are fully qualified in instructional technique. Their expertise is complimented by periodic operational deployment, maintaining their skills and knowledge of the industry. All instructors hold appropriate and valid qualifications within their disciplines.

Bespoke services

Our specialist instructors can create and develop bespoke training solutions to meet your own needs and specific projects.

We can take most training courses to a venue of your choice, minimising travel, accommodation and downtime costs.

Examples of bespoke training include:

- Emergency rescue plans
- AED advanced first aid with tourniquet
- Paint familiarisation
- IRATA rope access skills testing
- Medical rescue at height
- Individual rescue procedures
- Medical gases
- Lorry Loader - Vestas and Orsted accredited

Contact us to discuss your requirements and find out more.

Standard prerequisite requirements

- Participants must be **over 18** years old
- Completion of medical self assessment form upon arrival and daily thereafter
- Suitable work boots with ankle support
- Photographic ID - valid passport or driving licence
- Valid certification if the course requires prior training or is a refresher course
- GWO courses require registration with the GWO WINDA database:
winda.globalwindsafety.org/register
- IRATA level 2 and 3 courses require logbook
- ICATS level 1 module requires 2 x passport photographs





GWO courses

The objective of the Global Wind Organisation (GWO) is to ensure a common, industry-wide work practice of the highest safety standards.

As a certified GWO training provider, we offer a number of GWO courses. All courses are delivered from our training centre and include written and practical assessments along with hands-on exercises.

GWO courses on offer include:

GWO Basic Safety Training (BST)	4.5 day course
GWO Basic Safety Training Refresher (BSTR)	3 day course
available for offshore and onshore	

The BST course provides participants with the knowledge and skills necessary for working safely in the industry. The GWO BST is a **mandatory minimum** requirement for everyone working within the offshore/onshore wind industry.

This course consists of 5 modules that can be taken as a package or individually as stand alone courses:

- GWO working at height and manual handling (2 days BST / 1 day BSTR)
- GWO first aid (1 day BST / ½ day BSTR)
- GWO sea survival (1 day - **offshore only**)
- GWO fire awareness (½ day)

For participants to revalidate thier GWO BST, the current certificate(s) must still be in date. If the certificates have expired, participants will need to attend the full GWO BST Course. A refresher course can be completed up to 60 days prior to expiry with any additional days being added on to the new expiry date.

Both GWO Basic Safety Training and GWO Basic Safety Training Refresher certificates issued to sucessful participants are valid for **2 years**.

The BTT course is an entry level course that enables sucessful participants to perform basic technical tasks in a wind turbine environment under the supervision of an experienced and qualified technician.

BTT modules are as follows:

- GWO Mechanical
- GWO Electrical
- GWO Hydraulic
- GWO Bolt Tightening

The certificates issued to sucessful participants of the GWO Basic Technical Training modules have **no expiry date**.

GWO Crane and Hoist User (CHBU) **2 day course**

This course is designed to enable participants to safely operate small fixed cranes (eg. 8 metric tons/metre) and fixed hoists in the wind industry.

The course covers legislation, lifting plans and risk assesments, along with types of cranes/ hoists and relevent lifting accessories.

The GWO Crane and Hoist User certificate issued to sucessful participants has **no expiry date**.

GWO Crane and Hoist Service and Maintenance (CHIM)

This course is designed to enable participants to safely inspect, maintain and test fixed small cranes/hoists.

The course covers legislation, hydraulic, mechanical and electrical systems, along with troubleshooting and fault finding.

The GWO Crane and Hoist Inspection and Maintenance certificate issued to sucessful participants is valid for **3 years**.

GWO Slinger Signaller (SLS) **2 day course**

This course is designed for anyone working within an environment that requires slinging and signalling techniques during simple lifting/manoeuvre operations and is delivered from our training centre utilising our on-site mobile crane unit.

Upon successful completion of this course you will be able to work within most environments, including the wind industry, conducting simple slinging and signalling operations and manoeuvres with confidence and understanding.

The GWO Slinger Signaller certificate issued to sucessful participants has **no expiry date**.

This course offers participants additional knowledge and skills to be able to administer safe, effective and immediate lifesaving and enhanced first aid measures to save life and give assistance in remote areas using emergency equipment and medical teleconsultation.

For participants to revalidate their GWO EFA, the current certificate(s) must still be in date. If the certificates have expired, participants will need to attend the full GWO BST course. A refresher course can be completed up to 60 days prior to expiry with any additional days being added on to the new expiry date.

Both GWO Enhanced First Aid and GWO Enhanced First Aid Refresher certificates issued to successful participants are valid for **2 years**.

GWO Advanced Rescue Training (ART) Combined
GWO Advanced Rescue Training (ART) Combined Refresher

3 day course
3 day course

This course is designed for anyone who will be working in the wind industry that may need to perform advanced rescue or lead an advanced rescue operation. Delivered from our training centre, it includes a variety of rescue scenarios simulated within a wind turbine.

This course will give participants the skills, knowledge and confidence to perform rescue operations using industry rescue equipment, methods and techniques exceeding those within the GWO Working at Height training course.

To attend this GWO ART - combined course, participants must have valid GWO Working at Height, GWO Manual Handling and GWO First Aid certificates.

GWO ART modules are as follows:

- Hub, spinner and inside blade rescue (ART-H)
- Nacelle, tower and basement rescue (ART-N)
- Single rescuer: hub, spinner and inside blade rescue (SART-H)
- Single rescuer: nacelle, tower and basement rescue (SART-N)

Both ART-H and ART-N module certificates issued to successful participants are valid for 2 years. SART-H and SART-N module certificates issued to successful participants have no expiry date.

The refresher course allows participants to build on their knowledge and refresh their GWO Working at Height and Manual Handling as well as both ART-H and ART-N module certificates.



ICATS courses

The Industrial Coatings Application Training Scheme (ICATS) is mandated by The Highways Agency and Network Rail for all applicators but it is also an increasing requirement within many other industries such as the wind energy sector.

ICATS focuses on health & safety, access, paint types, surface preparation, coating application and QA/QC. Additional specialist modules in paint spraying and abrasive blast cleaning are also available.

ICATS Training Courses

There are three ICATS Industrial Painting modules available. The ICATS Protective Coatings Application (ICA) module must be completed as a prerequisite to attempting any further module. Only after successfully completing this course, can participants apply for the ICATS Abrasive Blast Cleaning and/or ICATS Spray Painting courses.

ICATS - Mentoring

Participants with less than 3 years industrial coatings application experience will hold a **trainee** status and require a qualified ICATS trainer/operative mentor in the workplace for a period of 1 year after successful completion of their ICA training.

A log of weekly activity must be kept and signed by the applicator and mentor during this period. The mentor must be an ICATS card holder with 5+ years' experience.

Holders of Coating Applicator Trainee cards may apply for the standard card after 1 year of mentoring.

ICATS Module 1 - Protective Coatings Application 5 day course

The objective of this training course is for participants to gain an understanding of the basic constituents and properties of coatings used for corrosion control and to gain an insight into coating systems.

This is a 5-day course is delivered from our training centre and includes 3-days theory and 2-days practical training. Assessment will be a multiple-choice test throughout the course and practical exercises.

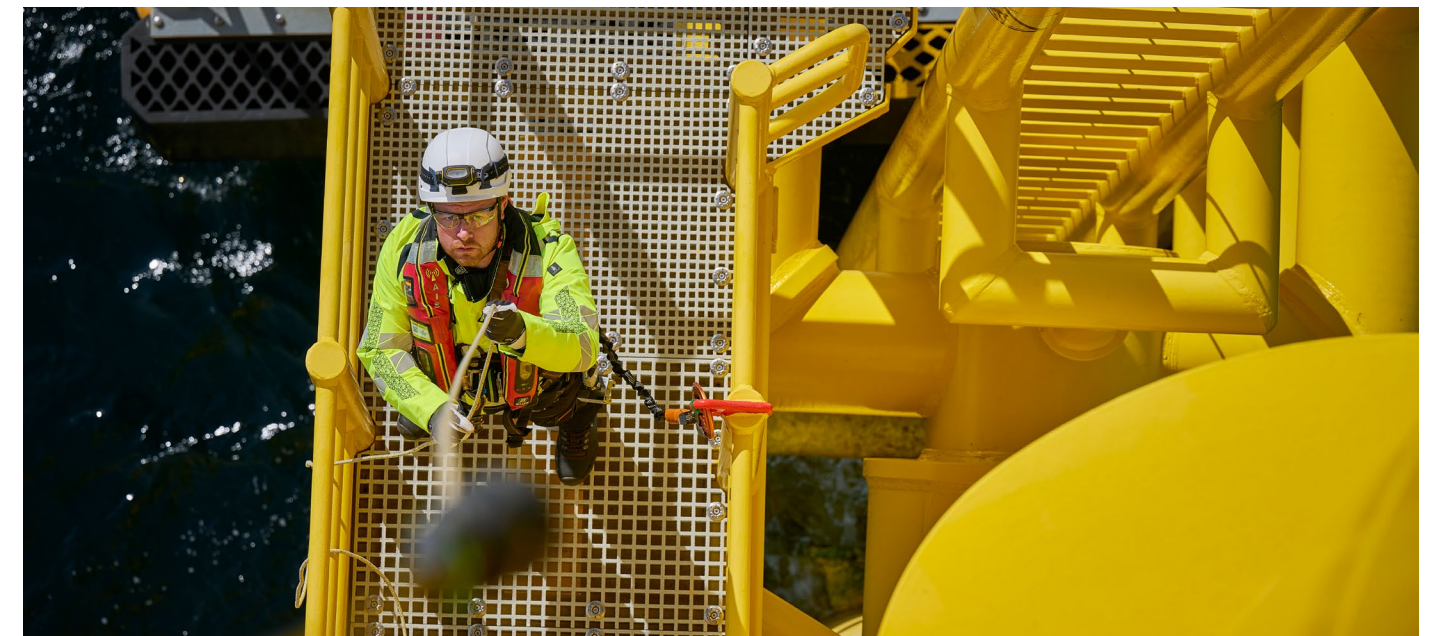
The objective of this training course is for participants to gain an understanding of the many applications of abrasive blast cleaning and the various uses of preparation. Also, to appreciate the role of the abrasive blast cleaning operator for industrial applications.

Abrasive blast cleaning is one of the most effective methods of surface preparation used for cleaning surfaces prior to application of industrial coatings.

ICATS Module 3 - Spray Painting 2 day course

The objective of this training course is for participants to gain an understanding of how liquid paints are applied.

Contact our training centre direct for any queries regarding ICATS courses, the current prerequisite requirements and to book the most suitable course for you.



Goracon Lift - User, Installation, Service and Maintenance 2 day course

This course provides participants with the knowledge, skills and abilities required for the safe operation and installation of the GWB-250-SWP and GWB-450-SWP service lifts as well as carryout the annual maintenance following instruction from the manufacturer's operation manuals.



The course is completed over 2 days and includes theory and practical elements including:

- Safe handling and operation of the service lift
- Recognising dangers and implementing required preventative measures
- How to perform daily checks following Goracon checklists
- How to prepare documentation and accompanying paperwork
- Installation and maintenance following Goracon operation manuals

Wind sector transition package (funded by ELCAS)

GWO Military Pathway into Wind

GWO Basic Safety Training

- GWO working at height and manual handling combined
- GWO first aid
- GWO sea survival
- GWO fire awareness

GWO Advance Rescue Training

GWO Enhanced First Aid

GWO Basic Technical Training

- Mechanical
- Electrical
- Hydraulic
- Bolt tightening



OEG Training Centre

City & Guilds courses

These courses are designed for those who have a need to enter, supervise or plan entry into a workplace designated as a confined space.

There are some generic requirements which are applicable for all of these courses, as follows: all participants must be over 18 years of age, are required to complete a medical self-assessment form, must wear suitable work boots and must have valid photographic ID.

Low risk 1 day course

The low risk confined space course provides the knowledge and skills to safely work in low risk confined spaces, including those associated with lone working where the application of proper procedures is required. Delegates will gain practical experience of using fall arrest and retrieval equipment. Tasks will also include appropriate ladder-climbing techniques which will allow for safe access and egress into a confined space.

Medium risk 2 day course

The medium risk confined space course provides the knowledge and skills to safely work in a medium risk environment and includes preparing to work safely, entering, and exiting medium risk confined spaces safely, using equipment and tools safely, following procedures and dealing with emergencies.

High risk 3 day course

The high risk confined space course is about working in confined spaces which have non-standard entries and which, in consequence, makes rescue difficult. It is likely that a hazard will be present at some time during the entry.

Entry may involve complex entry procedures and there will be work-specific controls and rescue arrangements. It will entail the use of self-contained open circuit breathing apparatus, specialist detection equipment, and resuscitation equipment. It will require the presence of personnel who have designated responsibilities for dealing with emergencies. The entry classification is NC4.

This confined space training course will cover all of the low and medium content, along with a more in depth risk assessment and the inclusion of wearing full breathing apparatus combined with basic emergency first aid.

OGUK medical & chester step

Oil & Gas UK (OGUK) sets a standard of fitness to be reached by anyone working in the industry, onshore or offshore.

It is increasingly accepted as a worldwide indicator of health and fitness for anyone working in the oil and gas and renewables industries.

Medical assessments are carried out to ensure an individual is fit to work in the onshore or offshore environment. We can arrange your OGUK medical and chester step for you either within your training programme or separately.

Bideltoid Shoulder Measurement

All passengers travelling offshore by helicopter are required to sit in a seat where the nearest emergency exit is compatible with their body size.

Helicopter passengers are measured by the width of their shoulders and those whose shoulder width is 55.9cm or greater are classified as Extra-Broad (XBR). Those below 55.9cm will be classified as ‘regular’. All XBR passengers are required to be re-measured at frequent intervals. It is recommended that these re-measurements are aligned with BOSIET expiry (4-years). When your measurement is taken, there could be an error margin of up to 1.1cm. Therefore, anyone with a shoulder measurement of 54.8cm or above will need to get re-measured.

Participants are required to wear a sleeveless top or equivalent garment which provides access to your upper arm and have a Vantage ID number.

Once measured a printed certificate will be issued and a pdf will be emailed upon request.

PRICE LIST	Length (days)	Code	Price	VAT	TOTAL
*prices correct at time of printing and subject to change					
GWO Basic Safety Training - Offshore	4.5	BST4.5	£900	£200	£1080
GWO Basic Safety Training - Offshore Refresher	3	BST3	£700	£140	£840
GWO Basic Safety Training - Onshore	3.5	BST3.5	£700	£140	£840
GWO Basic Safety Training - Onshore Refresher	2	BST2	£500	£100	£600
GWO First Aid	1	FA	£275	£55	£330
GWO First Aid Refresher	0.5	FAR	£200	£40	£240
GWO Working at Height with Manual Handling	2	WHMH	£400	£80	£480
GWO Working at Height with Manual Handling Refresher	1	WHMHR	£235	£47	£282
GWO Fire Awareness and Refresher	0.5	FAW(R)	£125	£25	£150
GWO Sea Survival and Refresher	1	SS(R)	£265	£53	£318
GWO Manual Handling and Refresher	0.5	MH(R)	£80	£16	£96
GWO Basic Technical Training	4	BTT	£1,562.50	£312.50	£1,875
GWO Crane and Hoist User	2	CHBU	£600	£120	£720
GWO Crane and Hoist Service and Maintenance	2	CHIM	£640	£128	£768
GWO Slinger Signaller	2	SLS	£450	£90	£540
GWO Enhanced First Aid	3	EFA	£450	£90	£540
GWO Enhanced First Aid Refresher	2	EFAR	£325	£65	£390
GWO Advanced Rescue Training - Combined	3	ART	£495	£99	£594
GWO Advanced Rescue Training Refresher - Combined	3	ARTR	£450	£90	£540
Goracon Lift User, Installation, Service & Maintenance		GLUISM	£950	£190	£1,140
ICATS Module 1 - Protective Coatings Application	5	ICATS1	£700	£140	£840
ICATS Module 2 - Abrasive Blast Cleaning	2	ICATS2	£475	£95	£570
ICATS Module 3 - Spray Painting	2	ICATS3	£475	£95	£570
OGUK Medical with Chester Step		OGUKM	£190	£38	£228
Chester Step		OGUKC	£50	£10	£60
Bideltoid Shoulder Measurement		BSM	£41.67	£8.33	£50

Contact our training centre direct for any enquiries regarding courses, the current prerequisite requirements and to book the most suitable course for you.

